

ENERFUSION INC.

Product Catalog

Volume 2024-8



“OFF THE GRID GREEN ENERGY”

Contact us at 844-8POWERUP (844-876-9378) or sales@enerfusioninc.com



Table Charging Stations



Aurora Solar Canopy

8



Gemini Table

12



Lynx

14



Solar Power Dok

16



Orion

18



Aurora Solar Picnic

20



Ara Solar Table

22



Ara-LT Solar Table

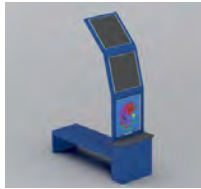
24

Bench Charging Stations



Pegasus Solar Bench

26



Pegasus LT

28



Aurora Solar Trellis **Bench or Swing**

30

e-Bike & e-Scooter Charging Stations



Phoenix e-Bike & e-Scooter Charging Station

32



Phoenix GT

34



Ara e-Bike & e-Scooter Charging Station

36

Kiosk Charging Stations



Solstice 2.0

38



Lyra

40

Solar Structures



Corvus

42



Aurora Solar Picnic Structure

44

Custom Tailored Products



Aquarius Solar Lounge

46



Pyxis Solar Setting Wall/ Pannel

48

Supplemental Products



Zembra Backed Chair

51



Zembra Non-Backed Chair

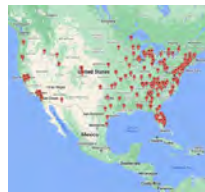
51



Skate Board Rack

51

Additional Literature



Product Location Map & Customers

50



Project Gallery

52



Color Options, WiFi, and Qi Wireless Information

62

The EnerFusion Advantage



Eco-Friendly

- Made with recycled plastic.
- Keeps plastic out of landfills.
- Can be re-recycled at end of lifecycle.



Sustainable Energy

- 100% solar energy powered charging stations.
- ”Off the grid” energy.



Life Long Quality

- Aluminum construction won't rust.
- Stainless steel fasteners won't corrode.
- Plastic planks won't rot or warp.
- Sealed maintenance free batteries.
- Marine grade wiring

Attractive designs combined with earth-friendly materials make our products unique. Our products are manufactured from recycled materials where possible, and they can be recycled at the end of their service as well. We also take an active sustainability approach to our manufacturing practices by recycling our production scrap pieces. We have minimal waste thus leaving a smaller carbon footprint on the environment.

Other manufacturers of similar furnishings utilize “fiberglass” and “steel” construction for their products. Fiberglass is nearly impossible to recycle and must be carefully handled at the end of its product life to not let its toxins collect in landfills. In addition, steel construction furnishings have been known to show signs of rusting in as little as a few months, particularly near coastal areas.

SOME FACTS ABOUT RECYCLING HDPE

(High Density Polyethylene)

- It takes 8 plastic milk jugs to equal 1 lb of recycled plastic.
- Approximately 145 lbs of recycled HDPE is in each Solar Power Dok unit. That's the equivalent of nearly 7250 plastic water bottles or nearly 1150 milk jugs in each unit!
- One good reason to recycle HDPE plastic is that there is so much of it.
- Recycling plastics has never been easier. Today, 80% of Americans have easy access to a plastic recycling program, whether it is a municipal curb side program or a local drop-off site.
- Recycling plastics conserves energy and natural resources and saves landfill space.

Eco-Friendly! EnerFusion is proud to supply an environmentally responsible, expertly-crafted product to the marketplace. Integration of recycled plastics and other eco-friendly components provide a durable alternative to other materials that are robbing our environment of our valuable natural resources. “Green Products for a Green World” is our contribution to saving our planet. Our products are versatile and stylish and are found at schools, hospitals, parks, trails, sports and recreation facilities.

Sustainable Energy! EnerFusion is powering and connecting mobile devices with energy from the sun at hundreds of locations across the world and growing every day! Our products are powered 100% by solar energy allowing the end-user a complete “off the grid” experience.

Life-Long Quality! EnerFusion’s goal is to provide quality products that will last a lifetime. We follow a strict protocol for production and testing. Each product must pass a Quality Checklist before leaving our facility. Products come with fully illustrated, step-by-step and easy-to-follow instructions. We also offer on-site “turn-key” installation to our clients for a seamless and hassle-free integration.

EnerFusion products are **MAINTENANCE FREE** with no need for any yearly storage fees. Our products are engineered to withstand the rigors of the outdoor environment year-round. Manufactured with unsurpassed sustainability, there is no need to stain, re-paint or replace boards due to rotting or splintering. We also use stainless steel fasteners on all our products. Stainless steel will not rust or corrode.

Located in our new manufacturing facility in Eaton Rapids, Michigan, EnerFusion’s owners and workforce share values that have made our country great. Hard work, honesty and the desire to deliver quality products is the mainstay of our company.



**Proudly Made in the
USA!**

**We are the manufacturer,
distributor, and installation
experts!**

**BABA Certified
Products!**

Aurora Solar Canopy



Transform your existing picnic table into a high tech “green-energy” eco-friendly masterpiece!

Introducing the “Aurora-Solar Canopy”, a solar-powered umbrella that has been designed to complement several picnic table models on the market that are equipped with a 1-1/2” diameter umbrella mounting hole in table surface.

EnerFusion also offers the Aurora and Gemini Tables with 4, 5, or 6 seating positions in backed or standard seat configurations. ADA accessibility in the 4 and 5 position seating arrangements.

4 Models Available

- Hex-Standard
 - Hex-Pro
- Quad-Standard
 - Quad-Pro



Aurora Features

Standard Model:

- (6) USB Type “A” power outlets
- (2) USB-C standard 5V charging - cell phone only
- (2) Qi enabled “Wireless-Quick Charging” 5W/7.5W/10W/15W 3coil wireless charging locations conveniently located on mini-table top surface.
- Ambient Lighting activated at dusk (qty 6).
- (2) 70 Watt Solar Panel. 140 watt array.
- Solar charge controller with digital readouts and bluetooth connectivity with mobile app to (IOS and Android) monitor system information.
- Robust capacity 20 Ah Gel Cell battery bank or an optional LiFePo4 battery module available for suitable climates.

PRO model:

Same great features as the Aurora Standard Canopy plus these exciting new enhancements!

- (3) 70 Watt Solar Panel. 210 watt array. (Hex Model)
- (4) 70 Watt Solar Panel. 280 watt array. (Quad Model)
- (3) USB Type “A” standard power outlets.
- (1) USB-C standard 5V charging. (Cell Phone Only)
- (1) USB Type “A” high speed power outlet /5V-4A/ 9V-2A /12V-1.5A
- (2) USB Type “C” power outlets.

Dual-Port High-Speed USB-C Charger Ports

* (1) 65W USB C Output: 5V-3.0 A / 9V-3A / 12V-3A / 15V-3A / 20V-3.25A

* (1) 20W USB C Output: 5V-3A / 9V-2.2A / 12V-1.67A

Use a USB-C to Lightning cable for Lightning devices with PD fast charging, and use a USB-C to USB-C cable to charge your USB-C laptops.

- (2) Qi enabled “Wireless-Quick Charging” 5W/7.5W/10W/15W 3coil wireless charging locations conveniently located on mini-table top surface.
- Robust capacity 20 Ah Gel Cell battery bank or an optional LiFePo4 battery module available for suitable climates.



Hex



Quad

Contact us at 844-8POWERUP (844-876-9378) or sales@enerfusioninc.com

Gemini Table



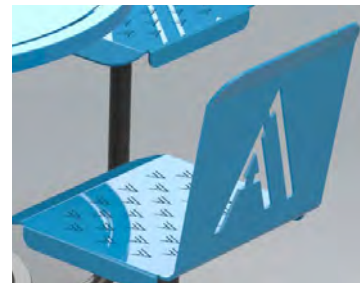
Introducing the “Gemini Table”, brings great versatility to the Aurora Hex and Quar Canopies. The “Gemini Table” is available in fixed seating, loose seating, standard table height and bar height. It can also accommodate a commercial umbrella that has a 1-1/2” diameter.

Seating Options

- Loose Chairs
- Fixed Chairs
- 3 Seat + ADA
- 4 Seat



Custom Designed Seating





**Gemini 4B
(shown with optional Aurora Solar Canopy).**



**Gemini 4B
(shown with optional Aurora
Traditional Canopy)**



Gemini without canopy.

Lynx



(Hexagon table with 6 seats.)

The Lynx is so much more than an ordinary picnic table, it is a solar-powered charging station and WiFi hotspot that is a great addition to any campus or outdoor venue. The Lynx has been designed to provide self-sustaining GREEN energy wherever it is placed outdoors with access to direct sunlight. Not only is this electronic device charging oasis powered by the sun, it is also made from recycled materials to be an eco-friendly masterpiece.

Features of the Lynx:

- Generates and stores electricity for use day or night for true “Off the Grid” GREEN power!
 - (1) Poly-recycled standard height table assembly and your choice of 3, 4, 5, or 6 seats. Seating is available in backed and non-backed styles. Unit may also be configured in ADA accessible configurations.
 - Two options available for the canopy design. “DT” model features a traditional umbrella style design and “1100” model features a double glass transparent BIPV panel array design.
 - (2) 120 vac 60 hz GFCI outlets and (4) USB Type “A” power outlets.
 - (4) Qi enabled “Wireless-Quick Charging” 5W/7.5W/10W/15W 3-coil wireless charging locations conveniently located on table top surface.
 - (2) USB Type “C” power outlets.
- Dual-Port High-Speed USB-C Charger Ports
- * (1) 100W USB C Output: 5V-3 A / 9V-3A / 12V-3A / 15V-3A / 20V-5A
 - * (1) 30W USB C Output: 5V-3A / 9V-3A / 12V-2.5A
- High intensity LED lighting system with timer, operated with the push of a button.
 - Ambient Lighting activated at dusk.
 - “DT” model features (6) 75 Watt Solar Panels (1) 130 Watt Solar Panel, total capacity 580 watts power generation.
 - “1100” model features (2) 550 Watt BIPV Solar Panels, total capacity 1100 Watts of power generation.
 - 500 Watt continuous pure sine wave power, 1000 watt peak surge (10min).
 - Robust capacity 100 Ah Gel Cell battery bank or an optional LiFePo4 battery module available for suitable climates.
 - Provides surge protected electricity for your electronic devices.
 - Adjustable angular settings for the umbrella to maximize the sun’s exposure on the solar panels.
 - Table constructed from poly-recycled plastic materials.
 - Structural components constructed from Aluminum, thus preventing any potential for rusting of the structure as seen with other outdoor furnishings on the market.
 - Stainless steel fasteners utilized for long lasting and rust-free securing of components.
 - Solar charge controller with digital readouts and bluetooth connectivity with mobile app (IOS and Android) to monitor system information.
 - Easy to clean surfaces.
 - Umbrella surfaces can accommodate custom logos.
 - Each product is fully customizable with many color choices available for table top, seat surfaces, structural aluminum components, and umbrella panel surfaces.



Lynx Seating Options:

- 3 Seat + ADA Accessible
- 4 Seat Model
- 5 Seat Model + ADA Accessible
- 6 Seat Model

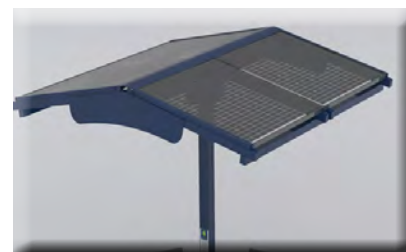
Seats available in standard, backed, or hybrid configuration.

Lynx Canopy Options

Traditional Canopy



1100 Series



Contact us at 844-8POWERUP (844-876-9378) or sales@enerfusioninc.com

Solar Power Dok



(Square table with 4 bench seats.)

The Solar Power Dok is so much more than an ordinary picnic table. It is a solar-powered charging station and WiFi hotspot that is a great addition to any campus or outdoor venue.

The Solar Power-Dok has been designed to provide self-sustaining GREEN energy wherever it is placed outdoors with access to direct sunlight. Not only is this electronic device charging oasis powered by the sun, it is also made from recycled materials to be an eco-friendly masterpiece.



Solar Dok with Traditional Canopy.
ADA configuration shown.



Solar Dok with the 1100 Series
Canopy.
ADA configuration shown.

Features of the Solar Power-Dok:

- Generates and stores electricity for use day or night for true “Off the Grid” GREEN power!
- (1) Poly-recycled table assembly with seating for (8). ADA accessible configuration available if desired.
- Provides (2) 120 vac 60 hz GFCI outlets.
- (4) USB Type “A” power outlets.
- (2) USB Type “C” power outlets.

Dual-Port High-Speed USB-C Charger Ports

* (1) 100W USB C Output: 5V-3.0 A / 9V-3A / 12V-3A / 15V-3A / 20V-5A

* (1) 20W USB C Output: 5V-3A / 9V-3A / 12V-2.5A

Use a USB-C to Lightning cable for Lightning devices with PowerIQ 3.0 fast charging, and use a USB-C to USB-C cable to charge your USB-C laptops.

- (4) Qi enabled “Wireless-Quick Charging” 5W/7.5W/10W/15W 3-coil wireless charging locations conveniently located on table top surface.
- High intensity LED lighting system with timer, operated with the push of a button.
- Ambient Lighting activated at dusk.
- “DT” model features (6) 75 Watt Solar Panels (1) 130 Watt Solar Panel, total capacity 580 watts.
- 500 Watt continuous pure sine wave power, 1000 watt peak surge (10min).
- Robust capacity 100 Ah Gel Cell battery bank or an optional LiFePo4 battery module available.
- Provides surge protected electricity for your electronic devices.
- Table constructed from poly-recycled plastic materials. Approximately 145 lbs of recycled HDPE in each Solar Power Dok unit. That’s the equivalent of nearly 7250 plastic water bottles or nearly 1150 milk jugs in each unit!
- Structural components constructed from Aluminum, thus preventing any potential for rusting of the structure as seen with other outdoor furnishings on the market.
- Stainless steel fasteners utilized for long lasting and rust-free securing of components.
- Solar charge controller with digital readouts and bluetooth connectivity with mobile app to (IOS and Android) monitor system information.
- Umbrella surfaces can accommodate custom logos.
- Each product is fully customizable with many color choices available for table top, seat surfaces, structural aluminum components, and umbrella panel surfaces.
- 150 MPH wind-rating!



Orion



(Round table with 3 bench seats.)

The Orion is so much more than an ordinary picnic table, it is a solar-powered charging station and WiFi hotspot that is a great addition to any campus or outdoor venue.

The Orion has been designed to provide self-sustaining GREEN energy wherever it is placed outdoors with access to direct sunlight.



Features of the Orion:

- Generates and stores electricity for use day or night for true “Off the Grid” GREEN power!
- (1) Poly-recycled table assembly with seating for (6).
- (2) 120 vac 60 hz GFCI outlets, (4) USB Type “A” power outlets, (2) USB Type “C” power outlets. Dual-Port High-Speed USB-C Charger Ports.
- * (1) 100W USB C Output: 5V-3.0 A / 9V-3A / 12V-3A / 15V-3A / 20V-5A
- * (1) 30W USB C Output: 5V-3A / 9V-3A / 12V-2.5A
- (3) Qi enabled “Wireless-Quick Charging” 5W/7.5W/10W/15W 3coil wireless charging locations conveniently located on table top surface.
- High intensity LED lighting system with timer, operated with the push of a button.
- Ambient Lighting activated at dusk.
- (6)75 Watt Solar Panels (1) 130 Watt Solar Panel, total capacity 580 watts power generation.
- 600 Watt continuous pure sine wave power, 1200 watt peak surge (10min).
- Robust capacity 100 Ah Gel Cell battery bank or an optional LiFePo4 battery module available for suitable climates.
- Provides surge protected electricity for your electronic devices.
- Adjustable angular settings for the umbrella to maximize the sun’s exposure on the solar panels for peak seasonal efficiency.
- Table constructed from poly-recycled plastic materials. Approximately 145 lbs of recycled HDPE in each Orion unit. That’s the equivalent of nearly 5500 plastic water bottles or nearly 880 milk jugs in each unit !!!!!!!
- Structural components constructed from Aluminum, thus preventing any potential for rusting of the structure as seen with other outdoor furnishings on the market.
- Stainless steel fasteners utilized for long lasting and rust-free securing of components.
- Solar charge controller with digital readouts and bluetooth connectivity with mobile app to (IOS and Android) monitor system information.
- Easy to clean surfaces.- Umbrella surfaces can accommodate custom logos.
- Each product is fully customizable with many color choices available for table top, seat surfaces, structural aluminum components, and umbrella panel surfaces.
- Powdura ECO recycled plastic powder coating finishes available.

Aurora Solar Picnic



Introducing the "Aurora Solar Picnic", a solar-powered picnic table and shade structure.

Introducing the "Aurora Solar Picnic", a solar-powered picnic table and shade structure.

This charging station is a great addition to any campus or outdoor space.

Table and seating surfaces available in recycled plastic or powder coated aluminum.

Seating pods can be configured as ADA accessible in any of the four locations.

The Aurora-Solar Picnic has been designed to provide self-sustaining "GREEN" energy wherever it is placed outdoors with access to direct sunlight.



Features of the Aurora Solar Picnic:

- Generates and stores electricity for use day or night for true “Off the Grid” GREEN power!
- Ambient LED Lighting activated at dusk.
- (6) 60 Watt Solar Panels, total capacity 360 watts power generation.
- (4) Qi enabled “Wireless-Quick Charging” 5W/7.5W/10W/15W 3coil wireless charging locations conveniently located on mini-table top surface.
- (3) USB Type “A” power outlets
- (1) USB-C standard 5V charging. (Cell Phone Only)
- (1) USB-A Quick Charge 5V 3A - 9V 2A charging.
- (2) USB Type “C” power outlets.

Dual-Port High-Speed 130 Watt USB-C Charger Ports

* (1) 100W USB C Output: 5V-3A / 9V-3A / 12V - 3A / 15V-3A / 20V-5A

* (1) 30W USB C Output: 5V3A / 9V-3A / 12V-2.5A

Use a USB-C to Lightning cable for Lightning devices with PowerIQ 3.0 fast charging, and use a USB-C to USB-C cable to charge your USB-C laptops.

- Solar charge controller with digital readouts and bluetooth connectivity with mobile app to (IOS and Android) monitor system information.
- Robust capacity 40 Ah Gel Cell battery bank or an optional LiFePo4 battery module available for suitable climates.
- Structural components constructed from Aluminum, thus preventing any potential for rusting of the structure as seen with other outdoor furnishings on the market.
- Stainless steel fasteners utilized for long lasting and rust-free securing of components.
- Easy to clean surfaces.
- Each product is fully customizable with many color choices available for table top, seat surfaces, structural aluminum components.
- Powdura ECO recycled plastic powder coating finishes available.

The Aurora Solar Picnic is Made in America!

Ara Solar Picnic



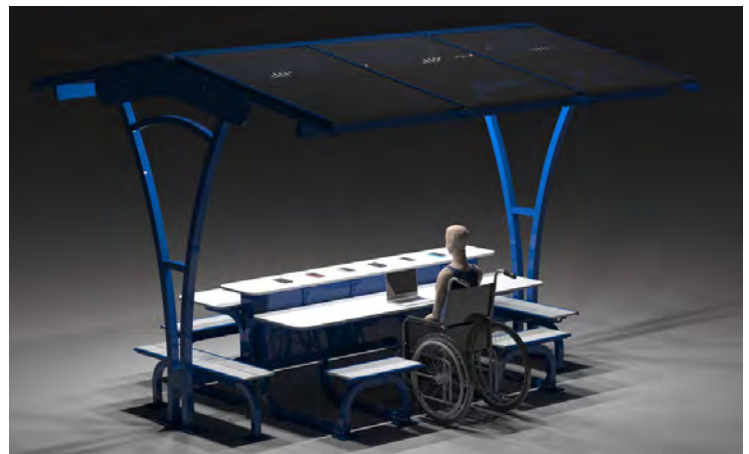
The Ara Solar Picnic is so much more than an ordinary picnic table, it is a solar-powered charging station and WiFi hotspot that is a great addition to any campus or outdoor venue.

EnerFusion's largest solar picnic table, offering an ample amount of shade.
Shade structure dimensions are 12' 3" X 11' 3".

****New Product of 2024****

Features of the Ara Solar Picnic:

- Generates and stores electricity for use day or night for true “Off the Grid” GREEN power!
- (4) USB Type “A” High-Speed charging outlet.
- (8) USB Type “C” charging outlets.
- * (4) 65W USB C Output: 5V - 3A / 9V - 3A / 12V - 3A / 15V - 3A / 20V - 3.2A
- * (4) 30W USB C Output: 5V - 3A / 9V - 3A / 12V - 2.5A
- (8) 120VAC GRCI receptacles.
- (6) Qi “Wireless” charging location conveniently located on the mini table top surface.
- 2490 watt BIPV solar panel array.
- Robust capacity 200Ah 24VDC Gel battery bank. An optional LiFePo4 battery module available for suitable climates.
- (8) LED lighting system operated automatically at dusk with configurable bluetooth timer operation to allow for adjustments to “ON” and “OFF” times.
- Solar charge controller with digital readouts and bluetooth connectivity with mobile app to monitor system information.
- ADA accessible in (1) or (2) positions.
- Seating for up to (12) or (10) with ADA locations.
- Structural components constructed from aluminum, thus preventing any potential for rusting of the structure as seen with other outdoor furnishings on the market.
- Seat and table top available in recycled plastic (9 colors to choose from) or in aluminum plate (188 colors to choose from).
- Stainless steel fasteners utilized for long lasting and rust-free securing of components.
- Easy to clean surfaces.
- Each product is fully customizable with many color choices available.
- Patent pending design.
- The “Ara Solar Picnic” is Made in America!



Ara-LT Solar Picnic



The ARA-LT solar picnic table is so much more than an ordinary picnic table, it is a solar-powered charging station and WiFi hotspot that is a great addition to any campus or outdoor venue. The ARA-LT solar picnic table has been designed to provide self-sustaining GREEN energy wherever it is placed outdoors with access to direct sunlight. Not only is this electronic device charging oasis powered by the sun, it is also made from recycled materials to be an eco-friendly masterpiece.



ARA-LT-SA



ARA-LT-CT

Features of the ARA-LT:

- Generates and stores electricity for use day or night for true “Off the Grid” GREEN power!
- (1) Poly-recycled table assembly with seating for (8). ADA accessible configuration available if desired.
- Provides (4) 120 vac 60 hz GFCI outlets.
- (4) USB Type “A” power outlets.
- (3) USB Type “C” power outlets.

Dual-Port High-Speed USB-C Charger Ports

* (1) 100W USB C Output: 5V-3.0 A / 9V-3A / 12V - 3A / 15V-3A / 20V-5A

* (2) 20W USB C Output: 5V-3A / 9V-3A / 12V-2.5A

Use a USB-C to Lightning cable for Lightning devices with PowerIQ 3.0 fast charging, and use a USB-C to USB-C cable to charge your USB-C laptops.

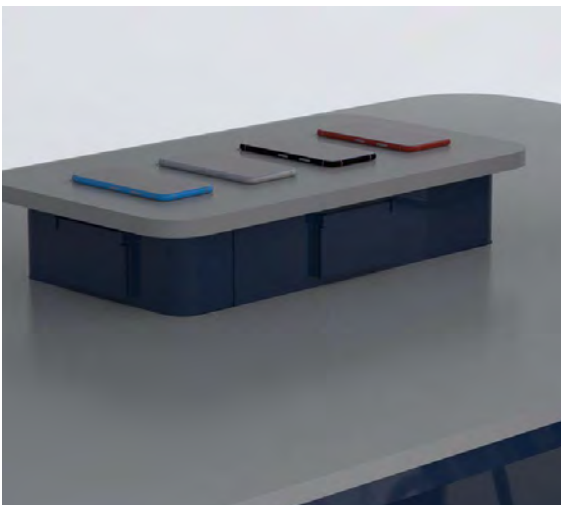
- (4) Qi enabled “Wireless-Quick Charging” 5W/7.5W/10W/15W 3-coil wireless charging locations conveniently located on table top surface.
- High intensity LED lighting system with timer, operated with the push of a button.
- Ambient Lighting activated at dusk.
- (2) 550 Watt Solar BIPV Panels.
- 1000 Watt continuous pure sine wave power, 2000 watt peak surge (10min).
- Robust capacity 200 Ah 12V Gel Cell battery bank or an optional LiFePo4 battery module available for suitable climates.
- Provides surge protected electricity for your electronic devices.
- Structural components constructed from Aluminum, thus preventing any potential for rusting of the structure as seen with other outdoor furnishings on the market.
- Stainless steel fasteners utilized for long lasting and rust-free securing of components.
- Solar charge controller with digital readouts and bluetooth connectivity with mobile app to (IOS and Android) monitor system information.
- Easy to clean surfaces.
- Each product is fully customizable with many color choices available for table top, seat surfaces, structural aluminum components, and umbrella panel surfaces.
- 170 MPH wind-rating!

The ARA - LT Solar Picnic Table is Made in America!

Made in America!

Optional features:

WiFi Hotspot



Pegasus Solar Bench



Introducing the “Pegasus Solar Bench”, a solar powered bench shade structure that has been designed to complement several park bench models on the market that are up to 96” in length. If you need a bench, EnerFusion also offers the Pegasus Solar Bench with an 8’ bench in backed and non-backed styles.



Pegasus Solar Bench with a backed bench seating position.



Pegasus Solar Bench with a standard bench seating position.



This model is intended to complement an existing park bench up to 8ft in length.

Features of the Pegasus Solar Bench:

- Generates and stores electricity for use day or night for true “Off the Grid” GREEN power!
- Ambient LED Lighting activated at dusk.
- (2) 130 Watt BIPV Solar Panels.
- (2) 120 vac 60 hz GFCI outlets.
- (2) Qi enabled “Wireless-Quick Charging” 5W/7.5W/10W/15W 3-coil wireless charging locations conveniently located on mini-table top surface.
- (3) USB Type “A” power outlets.
- (1) USB-C standard 5V charging. (Cell Phone Only)
- (1) USB-A Quick Charge 5V 3A - 9V 2A charging.
- (2) USB Type “C” power outlets.

Dual-Port High-Speed 130 Watt USB-C Charger Ports

* (1) 65W USB C Output: 5V-3A / 9V-3A / 12V - 3A / 15V-3A / 20V-3.2A

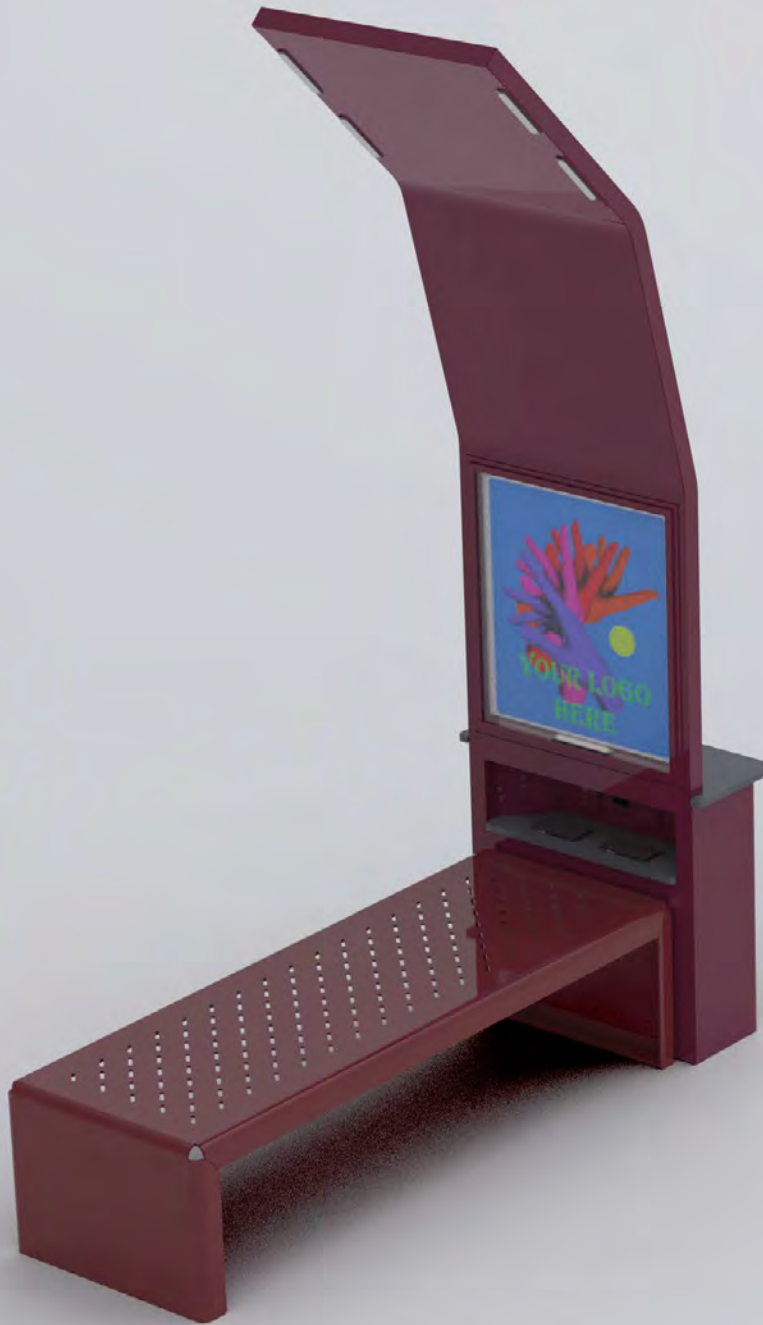
* (1) 30W USB C Output: 5V-3A / 9V-3A / 12V-2.5A

Use a USB-C to Lightning cable for Lightning devices with PowerIQ 3.0 fast charging, and use a USB-C to USB-C cable to charge your USB-C laptops.

- Solar charge controller with digital readouts and bluetooth connectivity with mobile app (IOS and Android) to monitor system information.
- Robust capacity 100 Ah Gel Cell battery bank or an optional LiFePo4 battery module available for suitable climates.
- Structural components constructed from Aluminum, thus preventing any potential for rusting of the structure as seen with other outdoor furnishings on the market.
- Stainless steel fasteners utilized for long lasting and rust-free securing of components.
- Easy to clean surfaces.
- Each product is fully customizable with many color choices available for table top, seat surfaces, structural aluminum components.
- Powdura ECO recycled plastic powder coating finishes available.

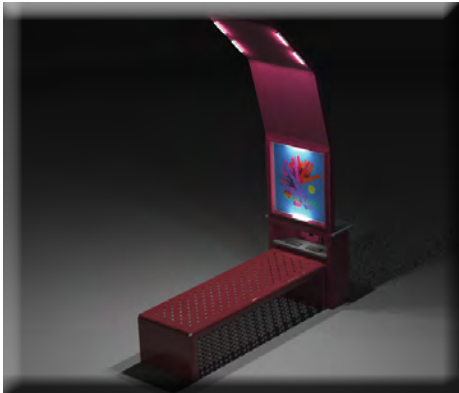
The Pegasus is Made in America!

Pegasus LT



Transform your outdoor space into a high tech “green-energy” eco-friendly masterpiece! Introducing the “Pegasus LT Solar Bench”, a solar-powered bench shade structure that has been designed to compliment several park bench models on the market. If you happen to need a bench, no problem, EnerFusion also offers the Pegasus LT Solar Bench with a couple 6’ bench options.

****New Product of 2024****



Features of the Pegasus LT:

- Generates and stores electricity for use day or night for true “Off the Grid” GREEN power!
 - Ambient LED Lighting activated at dusk.
 - (2) 75 Watt Solar Panels.
 - (2) Qi enabled “Wireless-Quick Charging” 5W/7.5W/10W/15W 3coil wireless charging locations conveniently located on mini-table top surface.
 - Digital Signage.
 - (4) USB Type “A” power outlets.
 - * (3) USB-A standard 5V charging. (Cell Phone Only)
 - * (1) USB-A Quick Charge 5V 3A - 9V 2A charging.
 - (3) USB Type “C” power outlets.
 - * (1) Std USB C Output.
 - * (1) 65W USB C Output: 5V-3A / 9V-3A / 12V-3A / 15V-3A / 20V-3.2A
 - * (1) 30W USB C Output: 5V-3A / 9V-3A / 12V-2.5A
- Use a USB-C to Lightning cable for Lightning devices with PowerIQ 3.0 fast charging, and use a USB-C to USB-C cable to charge your USB-C laptops.
- Solar charge controller with digital readouts and bluetooth connectivity with mobile app to (IOS and Android) monitor system information.
 - Robust capacity 55 Ah Gel Cell battery bank or an optional LiFePo4 battery module available for suitable climates.
 - Structural components constructed from Aluminum, thus preventing any potential for rusting of the structure as seen with other outdoor furnishings on the market.
 - Stainless steel fasteners utilized for long lasting and rust-free securing of components.
 - Easy to clean surfaces.
 - Each product is fully customizable with many color choices available for table top, seat surfaces, structural aluminum components.
 - Powdura ECO recycled plastic powder coating finishes available.

Optional features: WiFi Hotspot

The Pegasus LT Solar Bench is Made in America!

Aurora Solar Trellis



Transform your existing park bench into a high tech “green-energy” eco-friendly masterpiece!

Introducing the “Aurora-Solar Trellis”, a solar-powered bench shade structure that has been designed to complement several park bench models on the market that are up to 76” in length. If you happen to need a bench, no problem, EnerFusion also offers the Aurora-Solar Trellis with a bench in backed, non-backed, and swing configuration.

Model Options

- Backed bench seat.
- Non-backed bench seat.
- Swing bench seat.
- Structure for existing benches or chairs.



Aurora Solar Trellis

Features

Aurora-Solar Trellis:

- Generates and stores electricity for use day or night for true “Off the Grid” GREEN power!
- Fits many different park bench models up to 76” in width.
- (6) USB Type “A” power outlets.
- (2) USB-C standard 5V charging.
- Ambient Lighting activated at dusk.
- (4) 60 Watt Solar Panels, total capacity 240 watts power generation.
- Solar charge controller with digital readouts and bluetooth connectivity with mobile app to (IOS and Android) monitor system information.
- Robust capacity 40 Ah Gel Cell battery bank or an optional LiFePo4 battery module available for suitable climates.
- Structural components constructed from Aluminum, thus preventing any potential for rusting of the structure as seen with other outdoor furnishings on the market.
- Stainless steel fasteners utilized for long lasting and rust-free securing of components.
- Easy to clean surfaces.
- Each product is fully customizable with many color choices available for table top, seat surfaces, structural aluminum components.

Aurora Solar Trellis - Pro:

Same great features as the Aurora Solar Canopy plus these exciting new enhancements!

- (4) Qi enabled “Wireless-Quick Charging” 5W/7.5W/10W/15W 3coil wireless charging locations conveniently located on mini-table top surface.
- (6) 60 Watt Solar Panels, total capacity 360 watts power generation.
- (3) USB Type “A” power outlets.
- (1) USB-C standard 5V charging.
- (1) USB-A Quick Charge 5V 3A - 9V 2A charging.
- (2) USB Type “C” fast charging power outlets.

Dual-Port High-Speed 48 Watt USB-C Charger Ports

* (1) 65W USB C Output: 5V-3A / 9V-3A / 12V-3A / 15V-3A / 20V-3.2A

* (1) 30W USB C Output: 5V-3A / 9V-3A / 12V-2.5A

Use a USB-C to Lightning cable for Lightning devices with PowerIQ 3.0 fast charging, and use a USB-C to USB-C cable to charge your USB-C laptops.



- USB Type A & C ports on each beam.
- (2) “Qi” wireless charging pads on each beam for wirelessly charging of cell phones and earbuds.

Phoenix e-Bike & e-Scooter Charging Station



The Phoenix is a great addition to any campus or outdoor venue.

The Phoenix e-Bike and scooter charging station has been designed to provide self-sustaining GREEN energy wherever it is placed outdoors with access to direct sunlight. The Phoenix will provide charging and lockable storage for up to four e-Bikes at a time. The Phoenix can provide charging day or night. The dimensions of this unit are a perfect fit to place two in a standard parking space.



Features of the Phoenix e-Bike Charging Station:

- Generates and stores electricity for use day or night for true “Off the Grid” GREEN power!
- Provides (4) secure lockable parking spaces for your e-Bike with protective plastic surfaces to provide a scratch free interface with your e-Bike .
- Provides (4) 120 vac 60 hz GFCI outlets housed in a environment friendly cubby to place your charger out of the elements.
- Ambient Lighting activated at dusk.
- Robust capacity 200 Ah Gel Cell battery bank or an optional LiFePo4 battery module available for suitable climates.
- Provides surge protected electricity for your electronic devices.
- Powdura ECO recycled plastic powder coating finishes available.
- Structural components constructed from Aluminum, thus preventing any potential for rusting of the structure as seen with other outdoor furnishings on the market.
- Stainless steel fasteners utilized for long lasting and rust-free securing of components.
- Solar charge controller with digital readouts and bluetooth connectivity with mobile app to (IOS and Android) monitor system information.
- Easy to clean surfaces.- Umbrella surfaces can accommodate custom logos.
- Each product is fully customizable with many color choices available for table top, seat surfaces, structural aluminum components, and umbrella panel surfaces.
- 150 MPH wind-rating.

Contact us at 844-8POWERUP (844-876-9378) or sales@enerfusioninc.com

Phoenix GT



The Phoenix GT (Grid Tied) is a great addition to any campus or outdoor venue.

The Phoenix GT charging station is our first on the grid charging station. The Phoenix GT will provide charging and lockable storage for up to four e-Bikes or e-Scooters at a time. The Phoenix can also provide five lockers for e-scooters and two lockers can accommodate hoverboards.





Features of the Phoenix GT:

- Provides (4) secure lockable parking spaces for your e-Bike/ e-Scooter with protective plastic surfaces to provide a scratch free interface with your e-Bike.
- (6) Skateboard only lockers.
- (4) Skateboard & Hoverboard lockers.
- Provides (14) 120 vac 60 hz GFCI timer controlled outlets housed in a environment friendly cubby to place your charger out of the elements.
- Ambient Lighting activated at dusk.
- Powdura ECO recycled plastic powder coating finishes available.
- Structural components constructed from Aluminum, thus preventing any potential for rusting of the structure as seen with other outdoor furnishings on the market.
- Stainless steel fasteners utilized for long lasting and rust-free securing of components.
- Solar charge controller with digital readouts and bluetooth connectivity with mobile app to (IOS and Android) monitor system information.
- Easy to clean surfaces.
- Each product is fully customizable with many color choices available for structural aluminum components, and plastic panel surfaces.
- Facility to provide on grid circuit.



Ara e-Bike & e-Scooter Charging Station



The Ara is a great addition to any campus or outdoor venue.

The Ara e-Bike and e-scooter charging station has been designed to provide self-sustaining GREEN energy wherever it is placed outdoors with access to direct sunlight. The Ara will provide charging and lockable storage for up to twelve e-Bikes or e-scooters at a time. Ara can provide charging day or night. The dimensions of this unit are a perfect fit for many locations, coming in at approx. 12.25ft x 13.5ft.

Not only is this charging station designed for bikes and scooters, we offer an additional feature for skateboards.



****New Product of 2024****



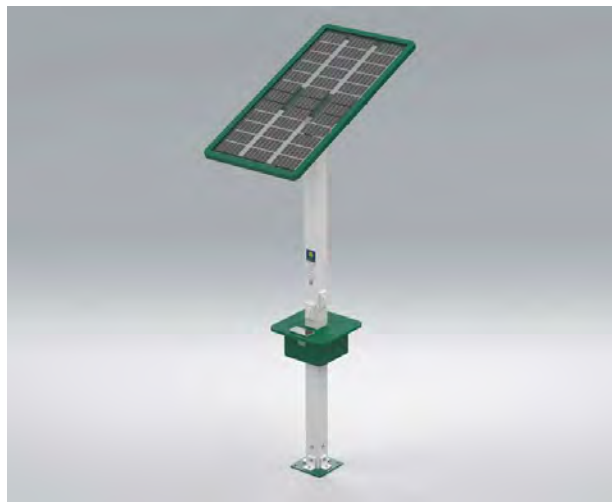
Features of the Ara e-Bike and e-Scooter Charging Station:

- Generates and stores electricity for use day or night for true “Off the Grid” GREEN power!
 - Provides (12) secure lockable parking spaces for your e-Bike with protective plastic surfaces to provide a scratch free interface with your e-Bike or e-Scooter.
 - Maintenance station with tethered tools.
 - (6) position lockable e-Skateboard charging rack.
 - Tire pump.
 - Provides (12) 120 vac 60 hz GFCI outlets housed in an environmentally friendly cubby to place your charger out of the elements.
 - Ambient Lighting activated at dusk.
 - Timer enabled lighting in the outlet cubbies. (Plastic bumpers for scratch resistance.)
 - 2490W Solar Array.
 - Robust capacity 48V 5000W LifePo4 battery.
 - Provides surge protected electricity for your electronic devices.
 - Structural components constructed from Aluminum, thus preventing any potential for rusting of the structure as seen with other outdoor furnishings on the market.
 - Stainless steel fasteners utilized for long lasting and rust-free securing of components.
 - Solar charge controller with digital readouts and bluetooth connectivity with mobile app to (IOS and Android) monitor system information.
 - Easy to clean surfaces.
 - Multiple surfaces can accommodate custom logos.
 - Each product is fully customizable with many color choices available for structural aluminum components and umbrella panel surfaces.
 - Powder ECO recycled plastic powder coating finishes available.
- ** Conforms to APBP Standards. ****
- 170 MPH wind-rating!

Solstice 2.0 Pro



Introducing the “Solstice 2.0”, a solar-powered charging station that has been designed to complement any park bench on the market. The “Solstice 2.0” is also great as a stand alone unit.



Features of the Solstice 2.0 Pro:

- Generates and stores electricity for use day or night for true “Off the Grid” GREEN power!
 - Provides (7) USB Type “A” power outlets.
 - (6) Type A standard charging.
 - (1) USB-A Quick Charge 5V 3A - 9V 2A charging.
 - (4) USB Type “C” power outlets.
 - (2) USB-C standard 5V charging. (Cell Phone Only)
 - (2) High-Speed USB-C Charger Ports.
 - * (1) 65W USB C Output: 5V-3A / 9V-3A / 12V-3A / 15V-3A / 20V-3.2A
 - * (1) 30W USB C Output: 5V-3A / 9V-3A / 12V-2.5A
 - Use a USB-C to Lightning cable for Lightning devices with PowerIQ 3.0 fast charging, and use a USB-C to USB-C cable to charge your USB-C laptops.
 - Provides (4) Qi enabled “Wireless-Quick Charging” 5W/7.5W/10W/15W 3coil wireless charging locations conveniently located on table top surface.
 - Ambient Lighting activated at dusk.
 - (1) 130 watt Double Glass BIPV Solar Panel.
 - Robust capacity 30 Ah Gel Cell battery bank or an optional LiFePo4 battery module available for suitable climates.
 - Solar charge controller with digital readouts and bluetooth connectivity with mobile app to monitor system information.
 - Easy to clean surfaces.
 - Each product is fully customizable with many color choices available for table top, seat surfaces, structural aluminum components, and umbrella panel surfaces.
- The Solstice 2.0 is Made in America!

Solstice 2.0 Pro Plus

- Generates and stores electricity for use day or night for true “Off the Grid” GREEN power!
 - Provides (7) USB Type “A” power outlets.
 - (6) Type A standard charging.
 - (2) 110V GFCI outlets.
 - (1) USB-A Quick Charge 5V 3A - 9V 2A charging.
 - (4) USB Type “C” power outlets.
 - (2) USB-C standard 5V charging. (Cell Phone Only)
 - (2) High-Speed USB-C Charger Ports.
 - * (1) 65W USB C Output: 5V-3A / 9V-3A / 12V-3A / 15V-3A / 20V-3.2A
 - * (1) 30W USB C Output: 5V-3A / 9V-3A / 12V-2.5A
 - Use a USB-C to Lightning cable for Lightning devices with PowerIQ 3.0 fast charging, and use a USB-C to USB-C cable to charge your USB-C laptops.
 - Provides (4) Qi enabled “Wireless-Quick Charging” 5W/7.5W/10W/15W 3coil wireless charging locations conveniently located on table top surface.
 - Ambient Lighting activated at dusk.
 - (1) 130 watt Double Glass BIPV Solar Panel.
 - (2) 30 Ah Gel Cell batteries.
 - Solar charge controller with digital readouts and bluetooth connectivity with mobile app to monitor system information.
 - Easy to clean surfaces.
 - Each product is fully customizable with many color choices available for table top, seat surfaces, structural aluminum components, and umbrella panel surfaces.
- The Solstice 2.0 is Made in America!

Lyra



Introducing the “Lyra”, a solar-powered charging station that has been designed to complement any park bench on the market.

The Lyra is also great as a stand alone unit. This charging station is a great addition to any campus or outdoor venue.

Features of the Lyra:

- Generates and stores electricity for use day or night for true “Off the Grid” GREEN power!
- Provides (4) USB Type “A” power outlets.
- Provides (2) Qi enabled “Wireless-Quick Charging” 5W/7.5W/10W/15W 3coil wireless charging locations conveniently located on table top surface.
- Ambient Lighting activated at dusk.
- (4) 20 watt and (1) 75 watt Solar Panels with a total capacity 155 watts of power generation.
- Robust capacity 55 Ah Gel Cell battery bank or an optional LiFePo4 battery module available for suitable climates.
- Structural components constructed from Aluminum, thus preventing any potential for rusting of the structure as seen with other outdoor furnishings on the market.
- Stainless steel fasteners utilized for long lasting and rust-free securing of components.
- Solar charge controller with digital readouts and bluetooth connectivity with mobile app to monitor system information.
- Easy to clean surfaces.
- Each product is fully customizable with many color choices available for table top, seat surfaces, structural aluminum components, and umbrella panel surfaces.

The Lyra is Made in America!



Corvus Solar Structure



This charging structure is a great addition to any campus or outdoor space.

The “Corvus Solar Structure” has been designed to provide self-sustaining “GREEN” energy for a larger group setting.

The Corvus has many models of chairs to choose from along with variations in table options.



Features of the Corvus Solar Structure:

- Generates and stores electricity for use day or night for true “Off the Grid” GREEN power!
 - Provides surge protected electricity for your electronic devices.
 - 12’ x 12’ Corvus Solar Structure.
 - (8) 130w BiPv Solar Panels.
 - Up to 6 Kw of solar generation per day.
 - 24v 100AH Gell Cell Battery Bank.
 - 24v DC 2000w Continuous, 4000w Peak, Solar charge controller and Inverter combo.
 - (4) Double Gang Weather/ Tamper Resistant GFCI Receptacles.
 - (8) 120v outlets.
 - (4) USB Type “A”& Type “C” Receptacles.
 - (4) USB Type “C” 100w Ports.
 - (4) USB Type “C” 30w Ports.
 - (4) USB Type “A” 18w Ports.
 - Use a USB-C to Lightning cable for Lightning devices with PowerIQ 3.0 fast charging, and use a USB-C to USB-C cable to charge your USB-C laptops.
 - (12) High Intensity LED Lights activated at dusk by programable digital timer.
 - ConduDisc Earth Grounding Technology.
 - Ceiling Fan (optional) \$450 add on (included)
 - Rain Gutter System with down spouts in the rear.
 - Back Side Privacy Wall.
 - Structural components constructed from Aluminum, thus preventing any potential for rusting of the structure as seen with other outdoor furnishings on the market.
 - Stainless steel fasteners utilized for long lasting and rust-free securing of components.
 - Each product is fully customizable with many color choices available for structural aluminum components, and canopy surfaces.
 - Easy to clean surfaces.
 - 200 MPH wind-rating!
 - Powdura ECO recycled plastic powder coating finishes available.
- The Corvus is Made in America!

Aurora Solar Picnic Structure



Introducing the "Aurora Solar Picnic Structure", a solar-powered picnic table structure designed to be placed over existing picnic tables that are up to 85" in length.

This charging station is a great addition to any campus or outdoor space with existing picnic tables in service.

This product can be up-fitted with two different canopy styles depending on customer requirements, clear BIPV panels, and MAXX BIPV panels.

The Aurora Solar Picnic Structure can accommodate a picnic table up to 85" in length.



“Clear BIPV Panels”

- Generates and stores electricity for use day or night for true “Off the Grid” GREEN power!
- Ambient LED Lighting activated at dusk.
- (2) 225-Watt Double Glass BIPV Solar Panels, total capacity 450 watts power generation.
- (2) 110 vac 60 hz GFCI outlets.
- (4) Qi enabled “Wireless-Quick Charging” 5W/7.5W/10W/15W 3-coil wireless charging locations conveniently located on mini-table top surface.
- (6) USB Type “A” power outlets.
- (2) USB-C standard 5V charging. (Cell Phone Only)
- (1) USB-A Quick Charge 5V 3A - 9V 2A charging.
- (2) USB Type “C” power outlets.
- Dual-Port High-Speed 130 Watt USB-C Charger Ports.
- * (1) 100W USB C Output: 5V-3A / 9V-3A / 12V-3A / 15V-3A / 20V-5A
- * (1) 30W USB C Output: 5V-3A / 9V-3A / 12V-2.5A
- Use a USB-C to Lightning cable for Lightning devices with PowerIQ 3.0 fast charging and use a USB-C to USB-C cable to charge your USB-C laptops.
- Robust capacity 55 Ah Gel Cell battery bank or an optional LiFePo4 battery module available for suitable climates.



“MAXX Clear BIPV Panels”

- Generates and stores electricity for use day or night for true “Off the Grid” GREEN power!
- Satellite internet access capable. (Pricing not included in below listed prices due to fluctuations with service and hardware plan pricings.)
- Ambient LED Lighting activated at dusk
- (6) 130-Watt Double Glass BIPV Solar Panels, total capacity 780 watts power generation.
- (4) 110 vac 60 hz GFCI outlets.
- (4) Qi enabled “Wireless-Quick Charging” 5W/7.5W/10W/15W 3-coil wireless charging locations conveniently located on mini-table top surface.
- (3) USB Type “A” power outlets.
- (1) USB-C standard 5V charging. (Cell Phone Only)
- (1) USB-A Quick Charge 5V 3A - 9V 2A charging.
- (2) USB Type “C” power outlets.
- Dual-Port High-Speed 130 Watt USB-C Charger Ports:
- * (1) 100W USB C Output: 5V-3A / 9V-3A / 12V-3A / 15V-3A / 20V-5A
- * (1) 30W USB C Output: 5V-3A / 9V-3A / 12V-2.5A
- Use a USB-C to Lightning cable for Lightning devices with PowerIQ 3.0 fast charging and use a USB-C to USB-C cable to charge your USB-C laptops.
- (2) Robust capacity 55 Ah Gel Cell battery bank or an optional LiFePo4 battery module available for suitable climates.

Shared Features

- Solar charge controller with digital readouts and bluetooth connectivity with mobile app to (IOS and Android) monitor system information.
- Each product is fully customizable with many color choices available.
- Structural components constructed from Aluminum, thus preventing any potential for rusting of the structure as seen with other outdoor furnishings on the market.
- Stainless steel fasteners utilized for long lasting and rust-free securing of components.
- Easy to clean surfaces.

Aquarius Solar Lounge



Introducing the “Aquarius Solar Lounge”, a solar-powered lounge chair and charging station.

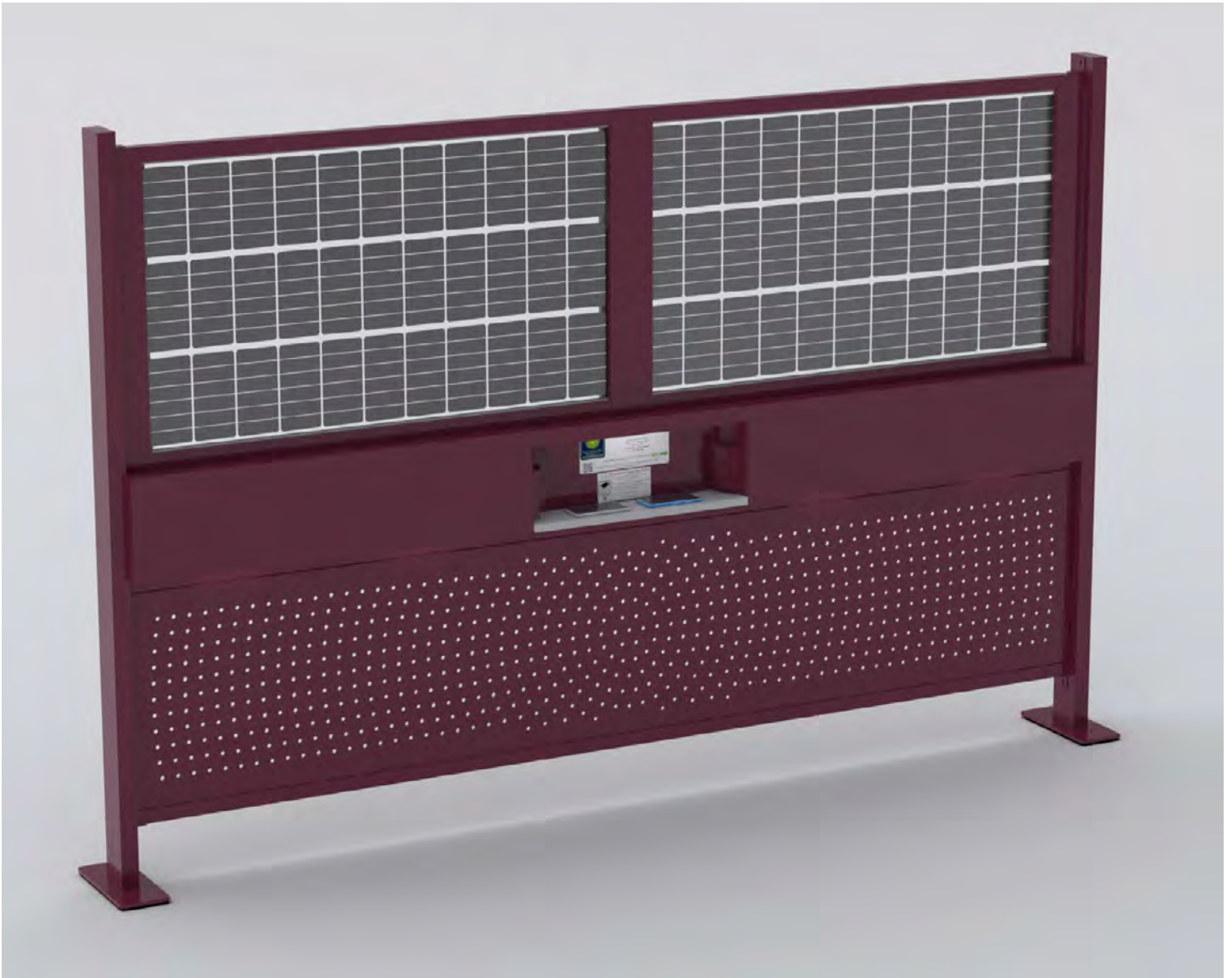
The Aquarius Solar Lounge has been designed to provide self-sustaining “GREEN” energy wherever it is placed outdoors with access to direct sunlight.



Features of the Aquarius Solar Lounge:

- Generates and stores electricity for use day or night for true “Off the Grid” GREEN power!
 - Ambient LED Lighting activated at dusk.
 - (1) 130 Watt BIPV Solar Panel.
 - (2) Qi enabled “Wireless-Quick Charging” 5W/7.5W/10W/15W 3coil wireless charging locations conveniently located on mini-table top surface.
 - (1) USB-A Quick Charge 5V 3A - 9V 2A charging (2) USB Type “C” power outlets.
- Dual-Port High-Speed USB-C Charger Ports
- * (1) 65W USB C Output: 5V-3A / 9V-3A / 12V-3A / 15V-3A / 20V-3.2A
 - * (1) 30W USB C Output: 5V-3A / 9V-3A / 12V-2.5A
- Use a USB-C to Lightning cable for Lightning devices with PowerIQ 3.0 fast charging, and use a USB-C to USB-C cable to charge your USB-C laptops.
- Solar charge controller with digital readouts and bluetooth connectivity with mobile app to (IOS and Android) monitor system information.
 - 20 Ah robust capacity LiFePo4 battery bank.
 - Structural components constructed from Aluminum, thus preventing any potential for rusting of the structure as seen with other outdoor furnishings on the market.
 - Stainless steel fasteners utilized for long lasting and rust-free securing of components.
 - Each product is fully customizable with many color choices available for table top, seat surfaces, structural aluminum components.

Pyxis

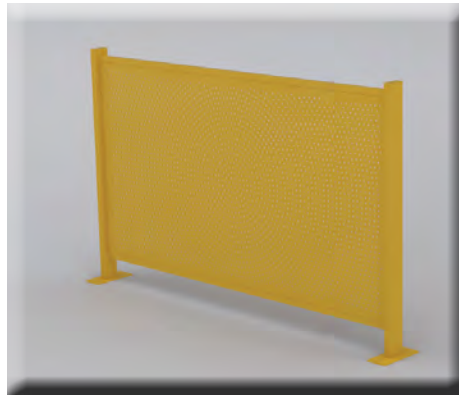


Pyxis Solar Settings is a solar-powered charging panel/wall that can be configured into many different layouts to create inviting spaces with function. Pyxis Solar Settings are great additions to any campus or outdoor venue. This exciting product has been designed to provide self-sustaining GREEN energy wherever it is placed outdoors with access to direct sunlight. Not only is this electronic device charging oasis powered by the sun, it is also made from recycled materials to be an eco-friendly masterpiece.

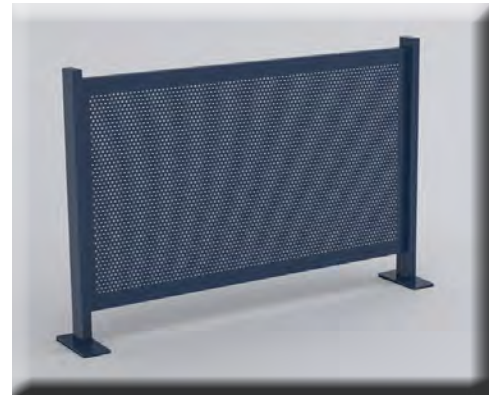
There are several panel configurations available to make your setting exceptional. If you don't see exactly what you are looking for, no problem, our design team is always available to bring to life exactly the perfect fit for your space.



4x6



5x8



6x4



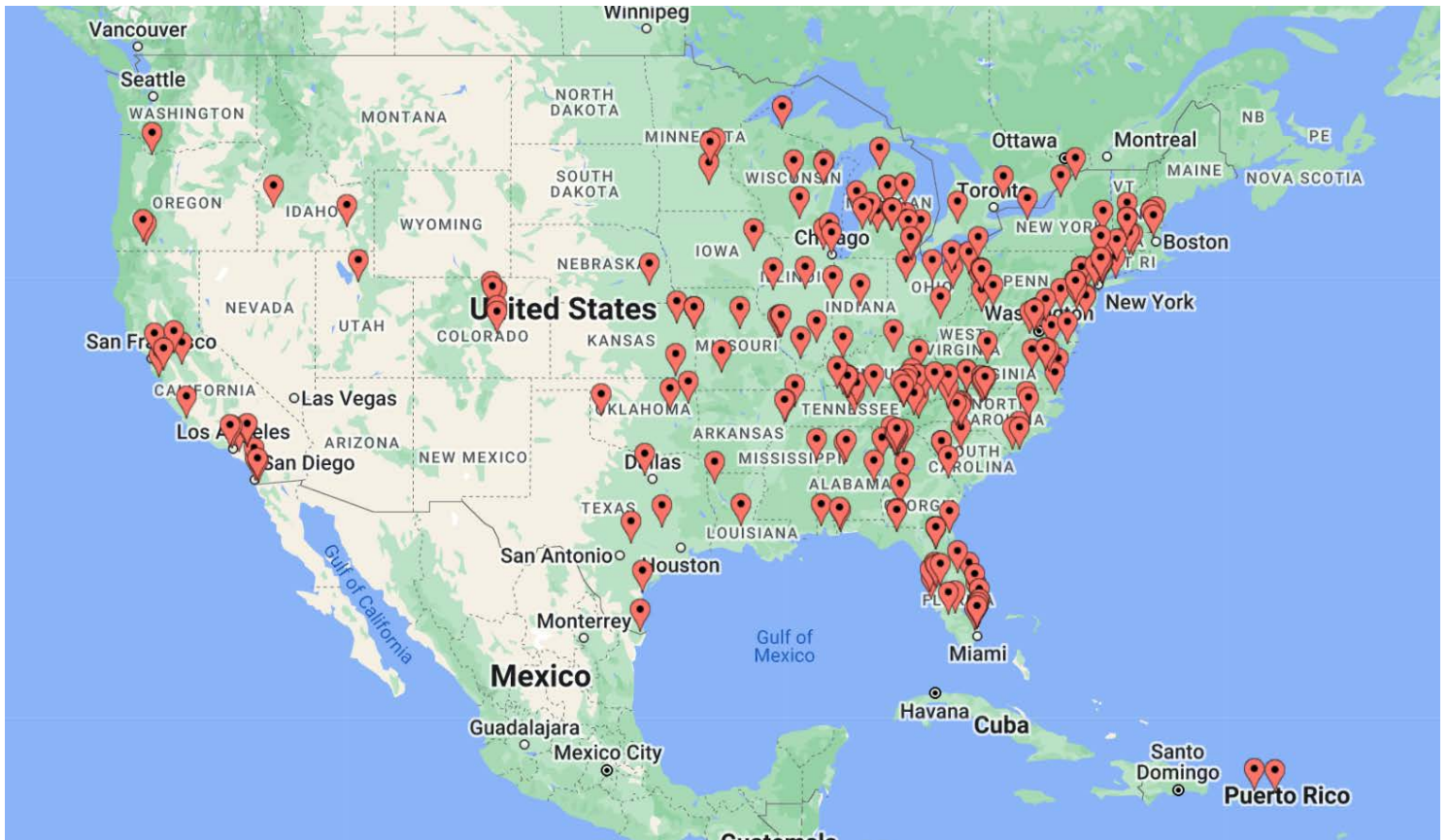
Features of the Pyxis:

- Generates and stores electricity for use day or night for true “Off the Grid” GREEN power!
- (4) USB Type “A” power outlets.
- (3) USB Type “C” power outlets.
- * (1) 100W USB C Output: 5V-3.0 A / 9V-3A / 12V - 3A / 15V-3A / 20V-5A
- * (2) 20W USB C Output: 5V-3A / 9V-3A / 12V-2.5A
- Use a USB-C to Lightning cable for Lightning devices with PowerIQ 3.0 fast charging, and use a USB-C to USB-C cable to charge your USB-C laptops.
- (2) Qi enabled “Wireless-Quick Charging” 5W/7.5W/10W/15W 3coil wireless charging locations conveniently located on table top surface.
- Ambient Lighting activated at dusk.
- (2) 130 Watt Double Glass Bi-facial Solar Panels.
- Robust capacity 40 Ah 12V Gel Cell battery bank or an optional LiFePo4 battery module available for suitable climates.
- Structural components constructed from Aluminum, thus preventing any potential for rusting of the structure as seen with other outdoor furnishings on the market.
- Stainless steel fasteners utilized for long lasting and rust-free securing of components.
- Solar charge controller with digital readouts and bluetooth connectivity with mobile app to (IOS and Android) monitor system information.
- Easy to clean surfaces.
- Each product is fully customizable with many color choices and patterns available to chose from. Custom patterns are also available upon request.

The Pyxis Solar Settings is Made in America!

Optional features: WiFi Hotspot

EnerFusion's Product Location Map



Over 250 installations worldwide!

Contact us at 844-8POWERUP (844-876-9378) or sales@enerfusioninc.com

Supplemental Products



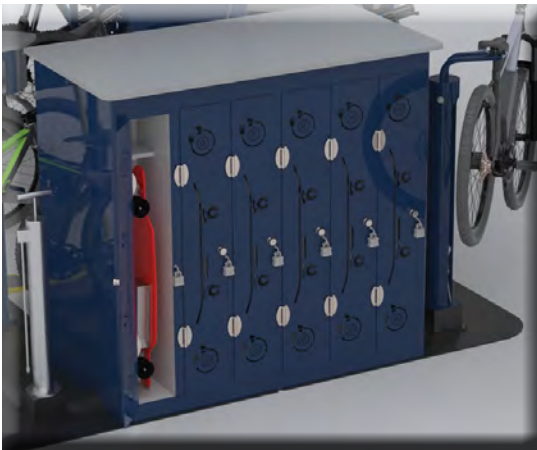
Zembra Backed Bar Height Stool



Zembra Backed Standard Height Stool



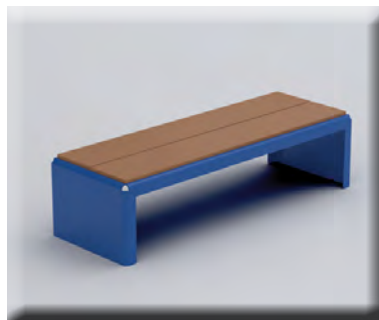
Zembra Non-Backed Bar Height Stool



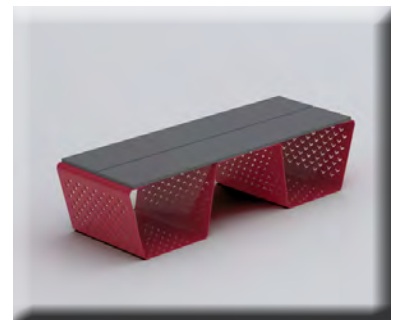
Skate board rack for the Ara e-Bike & a-Scooter structure.



“LT2B”



“LT1B”



“LTW”

Some of our featured clients!



The National Public Honors College



A State and Land-Grant Institution • University System of Georgia



ROWAN UNIVERSITY

Student Government Association



Haverhill Public Library

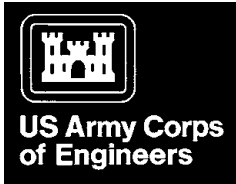
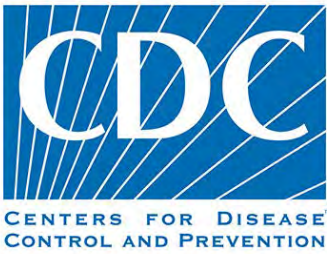


Fort Valley State University
EMPOWER *the* POSSIBLE.



Boise State University





Powering and connecting mobile devices with energy from the sun at hundreds of locations across the world and growing!

Contact us at 844-8POWERUP (844-876-9378) or sales@enerfusioninc.com

Some of our recent installations!





Contact us at 844-8POWERUP (844-876-9378) or sales@enerfusioninc.com













Plastic Table Top & Seat Color Options



Poly Product Table Colors



Powder Coat Color Options

Color matching is available upon request!

Black



Graphite Black 9011
 Jet Black 9005
 Signal Black 9004
 Traffic Black 9017

Blue



Azure Blue 5009
 Black Blue 5004
 Brilliant Blue 5007
 Capri Blue 5019
 Cobalt Blue 5013
 Distant Blue 5023
 Gentian Blue 5010
 Green Blue 5001
 Grey Blue 5008
 Light Blue 5012
 Night Blue 5022



Ocean Blue 5020
 Pastel Blue 5024
 Pigeon Blue 5014
 Sapphire Blue 5003
 Signal Blue 5005
 Sky Blue 5015
 Steel Blue 5011
 Traffic Blue 5017
 Turquoise Blue 5018
 Ultramarine Blue 5002
 Violet Blue 5000



Water Blue 5021

Brown



Beige Brown 8024
 Black Brown 8022
 Chestnut Brown 8015
 Chocolate Brown 8017
 Clay Brown 8003
 Copper Brown 8004
 Fawn Brown 8007
 Gray Brown 8019
 Green Brown 8000
 Mahogany Brown 8016
 Nut Brown 8011



Ocher Brown 8001
 Olive Brown 8008
 Orange Brown 8023
 Pole Brown 8025
 Red Brown 8012
 Sepia Brown 8014
 Signal Brown 8002
 Terra Brown 8028

Green



Black Green 6012
 Black Olive 6015
 Blue Green 6004
 Bottle Green 6007
 Brown Green 6008
 Chrome Green 6020
 Emerald Green 6001
 Fern Green 6025
 Fir Green 6009
 Grass Green 6010
 Grey Olive 6006



Leaf Green 6002
 Light Green 6027
 May Green 6017
 Mint Green 6029
 Mint Turquoise 6033
 Moss Green 6005
 Olive Drab 6022
 Olive Green 6003
 Opal Green 6026
 Pale Green 6021
 Pastel Green 6019



Pastel Turquoise 6034
 Patina Green 6000
 Pine Green 6028
 Reed Green 6013
 Reseda Green 6011
 Signal Green 6032
 Traffic Green 6024
 Turquoise Green 6016
 Yellow Green 6018
 Yellow Olive 6014

Grey



Orange



Red



Violet



White



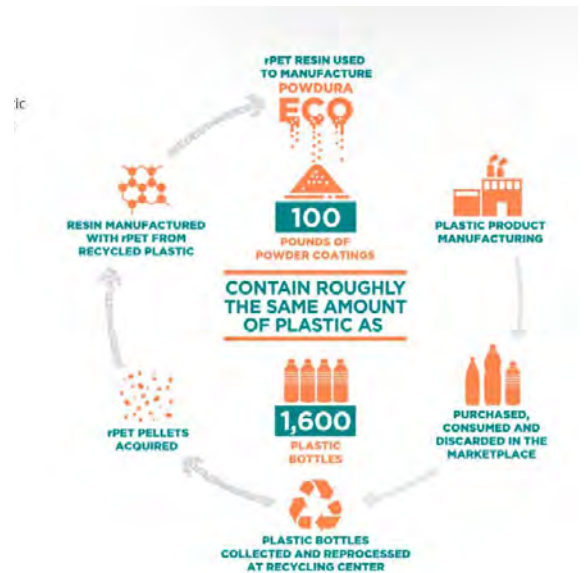
Yellow-Beige



POWDURA ECO POWDER COATINGS

From Plastic to Powder

Powdura® ECO powder coatings from Sherwin-Williams are a next-level approach to sustainability. This transformative product collection elevates powder coating sustainability to new heights – providing customers a more eco-conscious solution to product protection, color and performance. Launching first in the Powdura Eco range is our line of polyester TGIC and TGIC-free and polyester/epoxy hybrid formulations.



POWDURA ECO COLOR SELECTOR

POLYESTER TGIC



POLYESTER TGIC-FREE




Sherwin-Williams Powdura ECO coatings can be matched to meet your custom color needs. Products marked with an asterisk (*) are in-stock and ready to ship. Products not marked with * are available on a make-to-ship basis, ready in day.

Awning Color Options

1 	2 	3 	4 	5 	6 	7 	8 
CREST DENIM 4661-0000 NEW	CAPRI 4675-0000	SKY BLUE 4624-0000	SAPPHIRE BLUE 4641-0000	PACIFIC BLUE 4601-0000	MEDITERRANEAN BLUE 4652-0000	OCEAN BLUE 4679-0000	CONCORD 4665-0000
9 	10 	11 	12 	13 	14 	15 	16 
CAPTAIN NAVY 4646-0000	MARINE BLUE 4678-0000	NAVY 4626-0000	ALPINE 4655-0000	IVY NEW 4632-0000	FOREST GREEN 4637-0000	FERN 4671-0000	ERIN GREEN 4600-0000
17 	18 	19 	20 	21 	22 	23 	24 
SEAGRASS GREEN 4645-0000	PERSIAN GREEN 4643-0000	CREST ASH NEW 4662-0000	SMOKE 4615-0000	BLACK 4608-0000	SLATE 4684-0000	CHARCOAL GREY 4644-0000	CADET GREY 4630-0000
25 	26 	27 	28 	29 	30 	31 	32 
SILVER 4651-0000	NATURAL 4604-0000	OYSTER 4642-0000	PARCHMENT 4683-0000	LINEN 4633-0000	WHEAT 4674-0000	ASPEN 4668-0000	SPA 4673-0000
33 	34 	35 	36 	37 	38 	39 	40 
BASIL 4688-0000	GINKGO 4685-0000	TURQUOISE 4610-0000	ARUBA 4612-0000	AQUAMARINE 4623-0000	CREST BIRCH NEW 4660-0000	TAUPE 4648-0000	COCOA 4676-0000
41 	42 	43 	44 	45 	46 	47 	48 
TAN 4614-0000	NUTMEG 4686-0000	RUST 4689-0000	TUSCAN 4677-0000	SUNFLOWER YELLOW 4602-0000	BUTTERCUP 4635-0000	ORANGE 4609-0000	LOGO RED 4666-0000

Awning Color Options

49	50	51	52	53	54	55	56
							
JOCKEY RED 4603-0000	TERRACOTTA 4622-0000	BURGUNDY 4631-0000	BLACK CHERRY 4640-0000	MAHOGANY 4667-0000	TRUE BROWN 4621-0000	BEIGE 4620-0000	HEATHER BEIGE 4672-0000
57	58	59	60	61	62	63	64
							
TOAST 4628-0000	ROYAL BLUE TWEED 4617-0000	MEDITERRANEAN BLUE TWEED 4653-0000	HEMLOCK TWEED 4605-0000	DUBONNET TWEED 4606-0000	LINEN TWEED 4654-0000	CHARCOAL TWEED 4607-0000	MOCHA TWEED 4616-0000
65	66	67	68	69	70	71	72
							
WALNUT BROWN TWEED 4618-0000	TRESCO INDIGO 4694-0000	NEW TRESCO BRICK 4699-0000	TRESCO CLAY 4698-0000	TRESCO GINGER 4697-0000	TRESCO BIRCH 4696-0000	TRESCO BRASS 4658-0000	TRESCO LINEN 4695-0000
73	74	75	76	77			
							
SILICA STONE 4861-0000	SILICA SILVER 4862-0000	SILICA DUNE 4859-0000	SILICA BARLEY 4858-0000	SILICA SESAME 4860-0000			

Custom Awning Logo Printing Examples





EnerFusion has the capability to make wireless connectivity simple!

Provide WiFi coverage to your outdoor venue! Let us help you create a quick and easy “Sustainable - WiFi” experience for your patrons! EnerFusion Inc. has partnered with the top WiFi experts to deliver WiFi hotspot configurations in our model solar charging stations. These WiFi architectures can be configured with Satellite Internet, Meshed Network, or a Cellular Based solution.

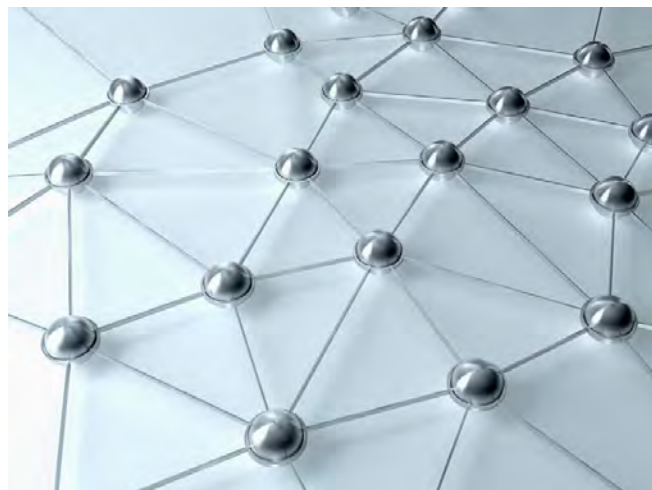


Satellite Internet Access

Up-fit your EnerFusion solar charging station with broadband-level internet access via satellite with service virtually anywhere. Available on the Lynx, Solar Power Dok, Corvus, Aurora Solar Picnic, and Aruora Solar Structure models.

Meshed Network

EnerFusion can create a wireless meshed network with your existing network! Any of our access points can seamlessly mesh with an existing network to extend your WiFi coverage to hard to wire areas. EnerFusion also has the ability to integrate any number of manufacturers hardware to match an existing network at your facility.



Cellular Based

No pre-existing WiFi system is needed at your location! All of our products can be integrated to offer a cellular 5G based WiFi hotspot solution. Our selected device can accommodate any carrier of our customers choosing (AT&T, Verizon, Sprint, etc). A variety of data packages ranging from 1GB to unlimited are available. We can meet your connectivity needs, big or small.

Also, network data security is of utmost priority with the cloud managed WiFi. The firewall and traffic shaping rules, VLAN tags, and bandwidth limits to enforce the right policies for each class of users.

Qi Wireless Charging

Charge it!

Wireless Charging is just what it sounds like — a way to charge your phone, tablet or other device without using any wires.

Wireless charging is as simple as placing your device on the charging pads on the table surface and letting the magic happen.

More and more devices are supporting wireless charging, and it's likely that soon all devices will support this method.



Wireless Charging Pads

STEP 1: If your device (phone, earbuds, etc.) is capable of Qi wireless charging, follow these next steps:



STEP 2: Place the device onto the Qi charging table surface below. (locate device onto the windowed cutout on table surface as shown in image.)

STEP 3: When device is placed properly on Qi charging pad, the device will sync and begin charging.

STEP 4: When done charging remove device.

Your device, Your responsibility
EnerFusion Inc. and/or Host Facility is not responsible for any lost, stolen, or damaged items.



EnerFusion's Team



Dream it. It's all about Solutions

EnerFusion, Inc. is a family owned and operated company that was founded in 2006 in Lansing, Michigan, by Joe Kobus. The vision of EnerFusion's owners and workforce is providing consumers with an easy, convenient, and safe source of "Green" power to connect and recharge portable electronic devices. Our products aim to ensure that whenever you need to plug in, we will be there to provide "Green" power for your electronic devices. GO ON, PLUG IN GREEN!

Our vision is set upon a strong set of core principles:

- To maintain the highest quality standards for our products.**
- To provide the best customer service possible.**
- To promote an inclusive workplace and help the community and environment.**



EnerFusion Inc.

Power-up GREEN!

www.enerfusioninc.com



www.enerfusioninc.com

Contact Us at 844-8POWERUP (844-876-9378) or sales@enerfusioninc.com